

 **SVNLIGHT**



Smart Home



WIFI ZigBee Solutions



A dark background graphic showing compatibility with various smart home ecosystems. It features icons for Tuya, Smart Life, Google Home, Amazon Alexa, the Apple App Store, Google Play, and the eWeLink app.

- Work with Tuya
- Work with Smart Life
- Google Home
- Amazon Alexa
- Available on the iPhone App Store
- ANDROID APP ON Google play
- eWeLink



EU 86*86 Type Touch Switch



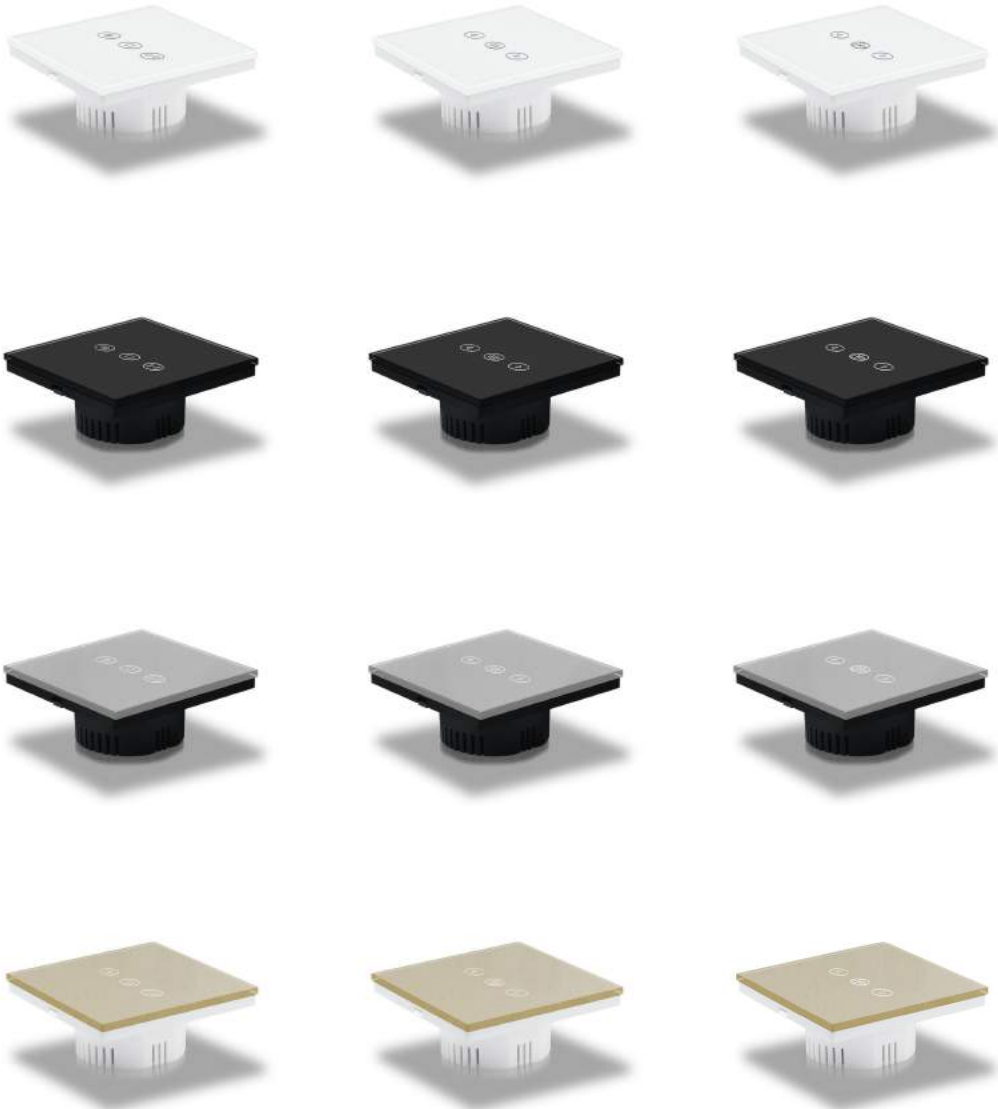
SW01-EU	1gang 1way, 600w/gang, neutral and live line	SZ01-EU
SW02-EU	2gang 1way, 600w/gang, neutral and live line	SZ02-EU
SW03-EU	3gang 1way, 600w/gang, neutral and live line	SZ03-EU
SW04-EU	4gang 1way, 600w/gang, neutral and live line	SZ04-EU

OEM support



SVNLIGHT

EU 86*86 Type Touch Switch



SW01T-EU	dimmer, 500w, neutral and live line	SZ01T-EU
SW01F-EU	fan, 300w, neutral and live line	SZ01F-EU
SW01C-EU	curtain , 1000w, neutral and live line (LEFT-RIGHT)	SZ01C-EU
SW01S-EU	shutter curtain, 1000w, neutral and live line (UP-DOWN)	SZ01S-EU

OEM support



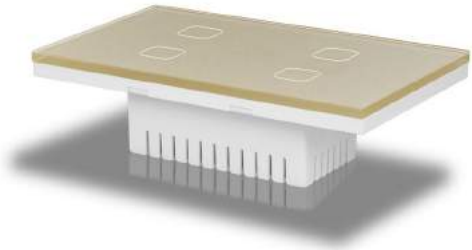
SVNLIGHT

US/AU 118*118 Type Touch Switch



4 different colors

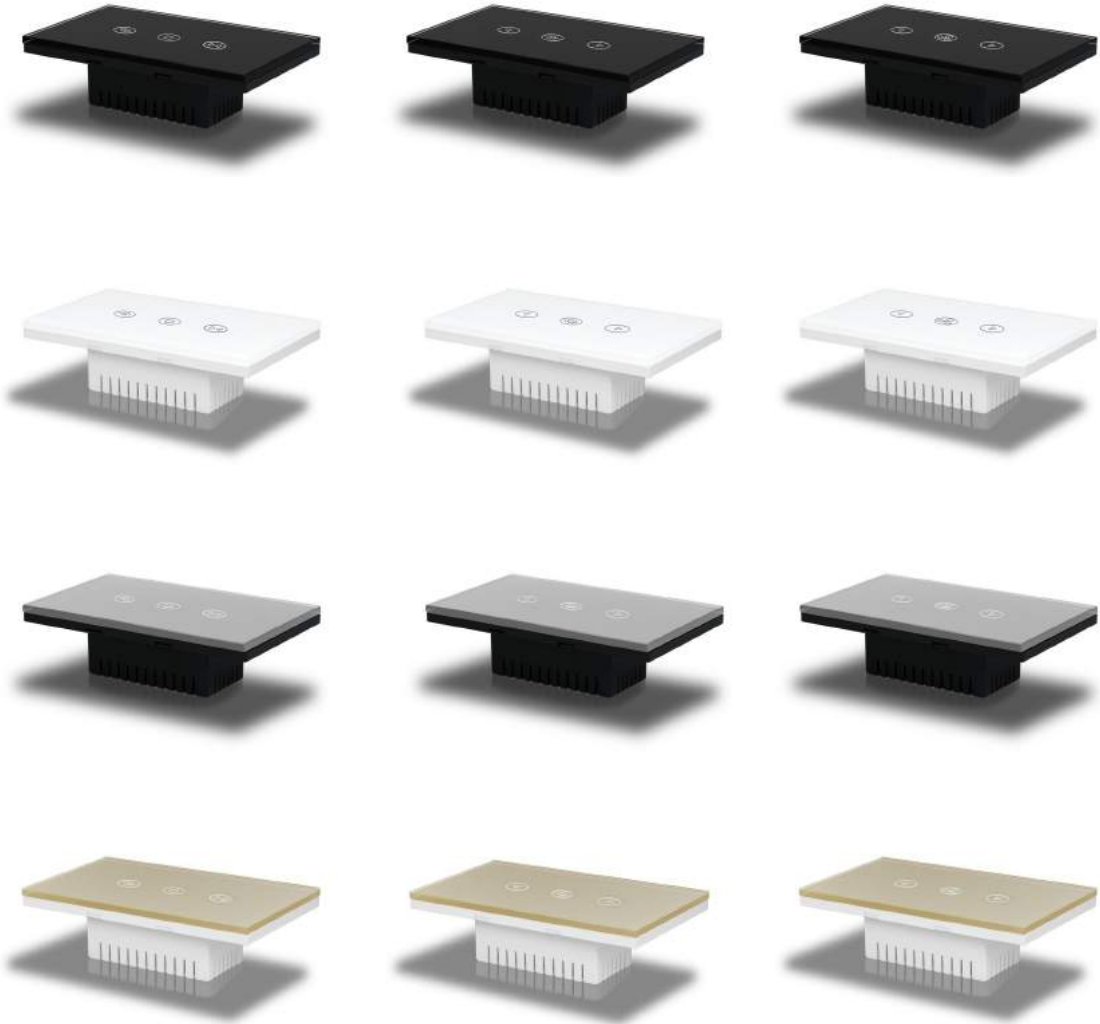
OEM support



SW01-US	1gang 1way, 600w/gang, neutral and live line	SZ01-US
SW02-US	2gang 1way, 600w/gang, neutral and live line	SZ02-US
SW03-US	3gang 1way, 600w/gang, neutral and live line	SZ03-US
SW04-US	4gang 1way, 600w/gang, neutral and live line	SZ04-US



US/AU 118*118 Type Touch Switch



SW01T-US	dimmer , 500w, neutral and live line	SZ01T-US
SW01F-US	fan, 300w, neutral and live line	SZ01F-US
SW01C-US	curtain, 1000w, neutral and live line (LEFT-RIGHT)	SZ01C-US
SW01S-US	shutter curtain, 1000w, neutral and live line (UP-DOWN)	SZ01S-US

OEM support



SVNLIGHT

Heating Thermostat WIFI



WFE11



WFE12



WFE13



WFE15



WFE16



WFE17



WFE18



WFE19



WFE19



WFE20



WFE20



WFE20

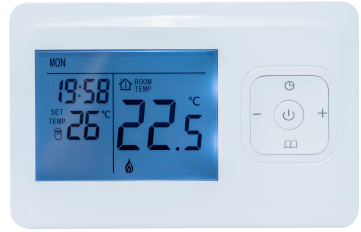
Heating Thermostat WIFI



WFE21



WFE21



WFE22



WFE23



WFE25



WFE26



WFE27



WFE28



WFE29



WFE95A

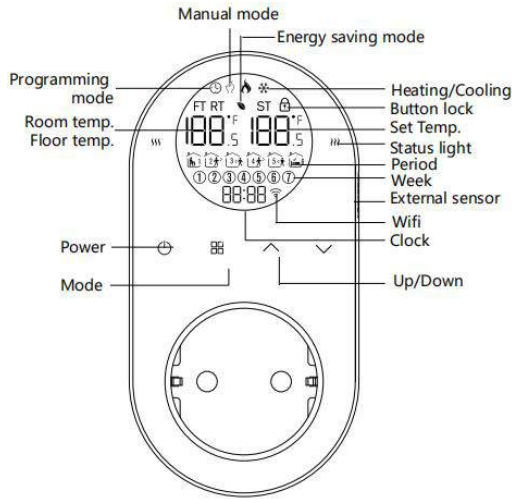


WFE95B



WFE96

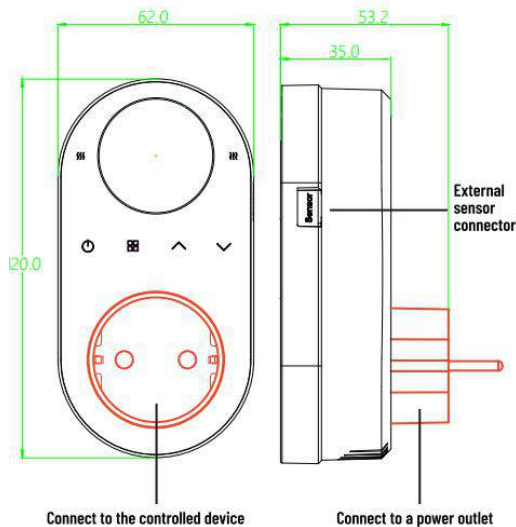
Plug-in Thermostat



WF66G
(LCD)



WF67G
(LED)





Product Feature:

ZigBee Smart Home Sensor kit works by connecting the hub sensor to your WiFi and then adding the sensors, which is all done via the free app which has to be downloaded to your smartphone or tablet.

This starter sensor kit is compatible with Android and IOS. It is simple to set up and use and the data it gives off really gives you a good idea of the users home habits.



App remote control



100m wireless distance



Remote alarm



Low power reminding



Smart linkage



Push notification



-10°C~+55°C

For detailed information please download the brochure



PDF Download

US Type Switch/Plug



Frequency: 908.42MHz
800 series chipset

Z-Wave home Automation



Incandescent: 600W maximum, 120 VAC.
Resistive: 15 amps (1800W) maximum, 120 VAC
Motor: 1/2 H.P. maximum, 120 VAC

SVNZ36



Relay: 15Amp * 1
Smart ON/OFF Outlet *1
+ Always-on outlet *1

SVNZ31S



Maximum Load:500W

Frequency: 868.42MHz/908.42MHz
700 series chipset

Double Relay Module SVNZ74



Maximum Load: 150W LED or CFL bulbs, 500W incandescent,
5A resistive, 1/4 HP motors per channel

Nano Motor Controller SVNZ75

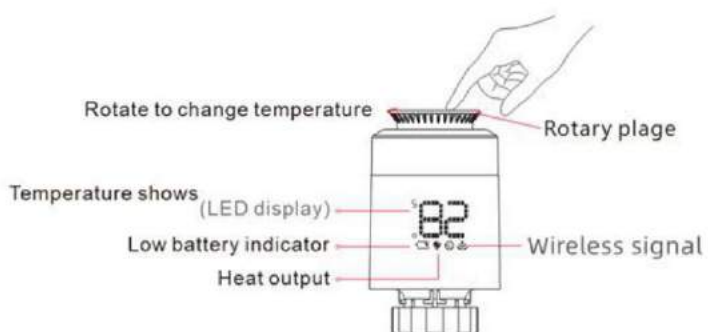


Motor type: Single-phase AC asynchronous motor.
Max load rating: 100-240VAC, 50/60Hz, Max:5A.

Thermostatic Radiator Valve



TRV31



- Frequency: 868.42MHz (EU)
- Wireless Range: Up to 300 feet line of sight
- Power Source: AA*2
- Working current: ~20mA
- Standby current: ~30uA
- Temperature setting accuracy: 0.5°C
- Room temperature display range: 0-50°C
- Operating temperature range: 5-30°C
- Operating humidity: Up to 85% non-condensing

